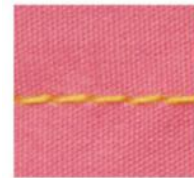


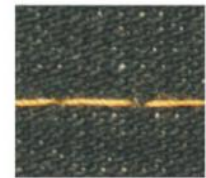
SR-9800D4M

Direct drive computer High speed Lockstitch sewing Machines with auto trimmer

直驅式自動剪線電腦高速平縫機



薄料 Thin materials



中厚料 Medium materials

電子夾綫器裝置
Electronic thread tension
controller

選配 Optional

不銹鋼面板
Stainless Steel Plate

選配 Optional



自動抬壓腳電磁鐵

繞綫機構
Winding structure進口旋梭
Imported hook

選配 Optional

自動抬壓腳裝置
Automatic presser foot
lifter device

選配 Optional

FEATURE

直驅伺服馬達，比普通機器省電70%以上，超大操作空間，採用優良的送布機構，在低張力的狀態下能防止高速時的跳動，大提高了生產效率。美觀大方，操作簡便。低噪音，無輻射，環保型。可適應服裝行業薄、中、厚料的縫紉。

Equipped with direct-drive servo motor. can save 70% electricity super work space, adopted advanced feeding mechanism, preventing leaping in high-speed at lower tension, upgrading the efficiency. Beautiful appearance. easily operation. Lower noise, without radiation. Suitable for light , medium, heavy of garment sewing.



SR-9800D4M

5000

DB×1 9-14#

★ ★ -

0/5

5.5-15

★

-

★

34.5/40.5

635×235×540